



# The InfoCenter Version 2.12 SOFTWARE MANUAL



FOR MODELS  
PL-160RWL/GWL  
PL-160RL/160GL  
PL-160RLWD/160GLWD  
PL-VFD

## INSTALLATION

Insert the 3.14" diskette into the disk drive.

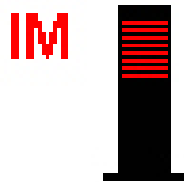
Click on 'My Computer' and browser for the local 3.14" disk drive.

Create a new directory/folder in your hard-drive, and name it "InfoCenter."

Copy all the contents in the disk into the new directory/folder.

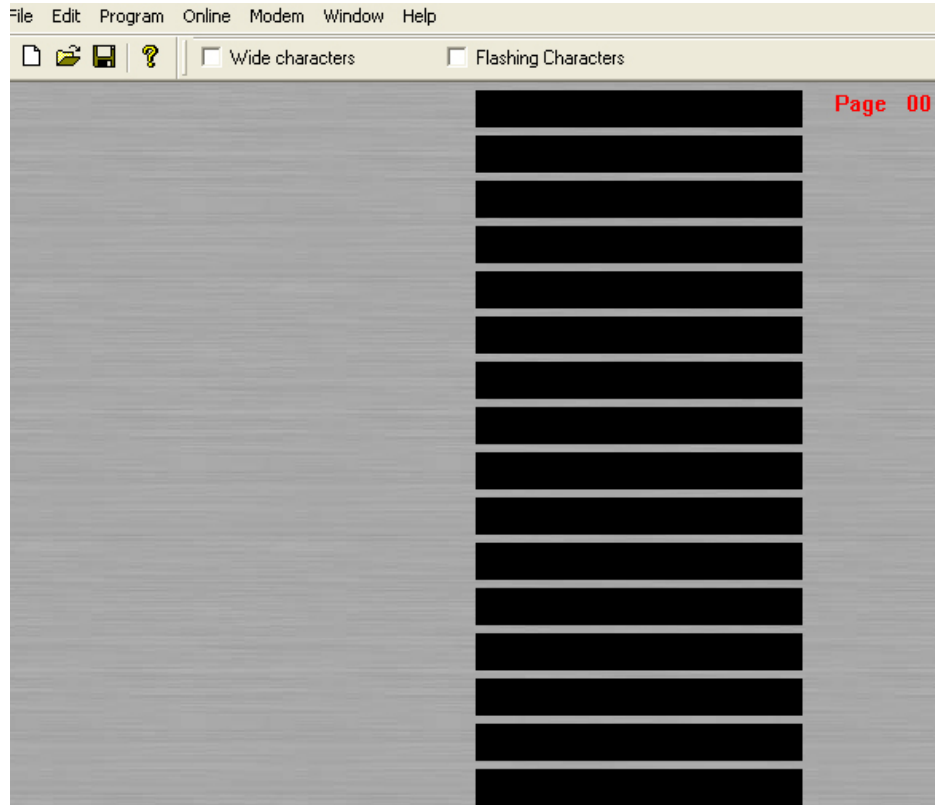
**Make sure that cable (adaptor and cable should be included with software package) is connected from The InfoCenter to the computer**

## UNDERSTANDING THE INTERFACE



Locate the above icon in the directory where you installed the software.  
Double click the icon to run the InfoCenter.

This screen will display:

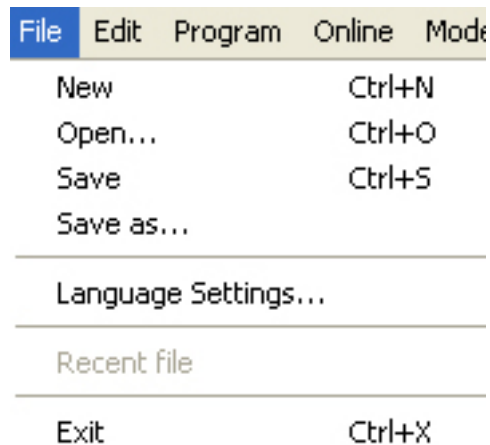


The program itself will detect how many com-ports are available on the computer. (Com-Port is where the cable is connected to the computer)

Up on the top is the insert menu, which it has a list of options.

File Edit Program Online Modem Window Help

## FILE



New – Open a new InfoCenter file.

Open – Open an existed InfoCenter file.

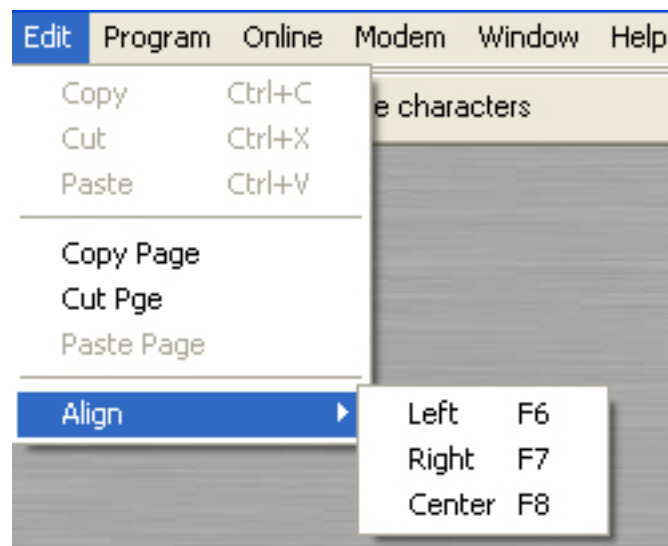
Save/Save As... - Save the current InfoCenter file.

Language Settings... - The language setting for the interface.

Recent File – Open the most recent file.

Exit – To exit the program.

## EDIT



Edit option allows you to copy, cut, and paste your messages. The Align tool allows you to align the text that you entered to the left, right or the center.

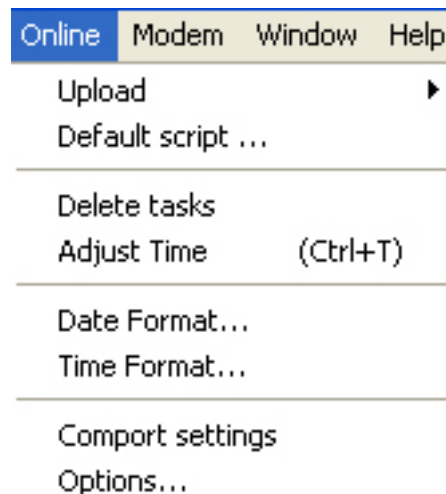
## PROGRAM

The 'PROGRAM' dialog box is used for configuring a script. It features several sections:

- Scripts:** A list of scripts from Script 00 to Script 09. Script 00 is currently selected.
- Edited Pages:** A list of pages that have been edited, with buttons for 'Add above', 'Add below', and 'Add All'.
- Weekdays of Script 0:** Checkboxes for Sunday, Monday, and Tuesday, all of which are checked.
- Start time of Script 0:** A time selection field set to 0 H: 0 M.
- Stop time of Script 0:** A time selection field set to 23 H: 59 M.
- Start date of Script 0:** A date selection field set to 1/ 1/1970.
- Stop date of Script 0:** A date selection field set to 12/30/2037.
- Add the following pages into Script 0:** A table with columns for Key, Pause, and Style. To the right of the table are buttons for 'Up', 'Down', 'Delete', and 'Reset'.
- Send Options:** Checkboxes for 'Include Pages' and 'Include Scripts', both of which are currently unchecked.
- Buttons:** 'Accept' and 'Cancel' buttons at the bottom right.

This is where you will be setting up schedules/agendas and other details regarding how you want your message to be displayed on The InfoCenter. (See page. 6 for more details)

## ONLINE



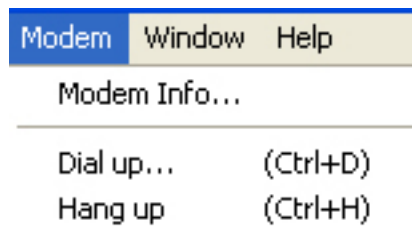
The 'Online' option allows you to set the format and setting of the current message. Within the 'Online' menu, you will also be able to transfer the page(s) and script to The InfoCenter.

Comport Settings – When the program starts running, it will detect all the available comport on the computer. Please locate the comport that is connected to The InfoCenter.

(If you are not sure which comport is connected to The InfoCenter, create a simple page, and submit it to The InfoCenter. If you receive an error message, it is either you have selected the wrong comport or cable connection error)

Options – This is where you can adjust how you want to transfer the program scripts/files to The InfoCenter. By default, it should be set as “Send though RS-232 Port.”

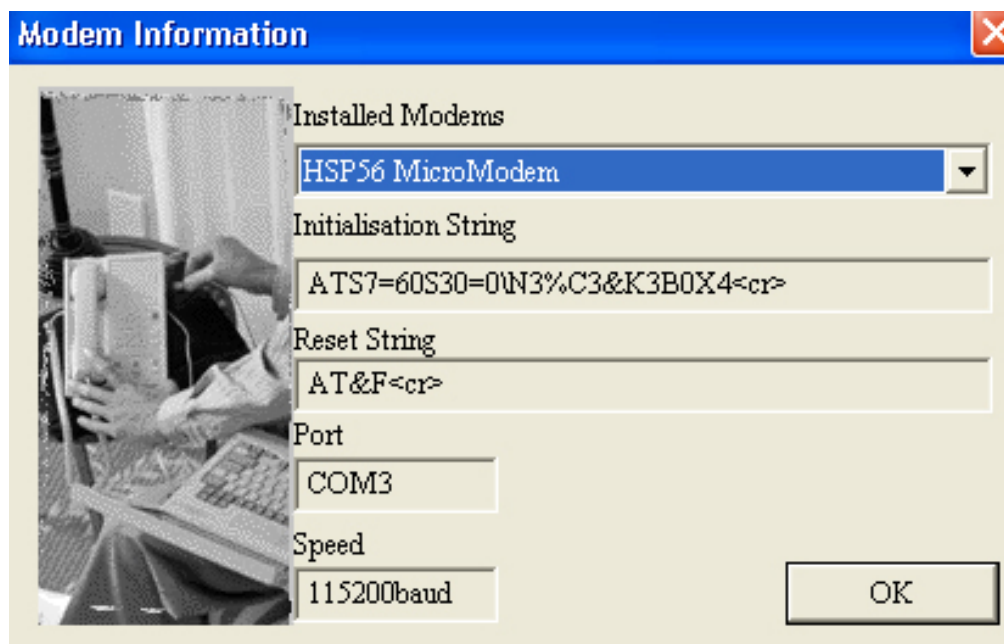
### MODEM



If you have a modem installed on your computer, and would like to use it to transfer the programs to The InfoCenter, here is where you set up your modem's configuration.

If you have a direction connection from the computer to The InfoCenter (via the Comport), you do not need to use the modem.

Modem Info:



Dial up – Setting up the dial-up configuration for your modem.

Hang up – Disconnect the modem connection.

### *WINDOW*

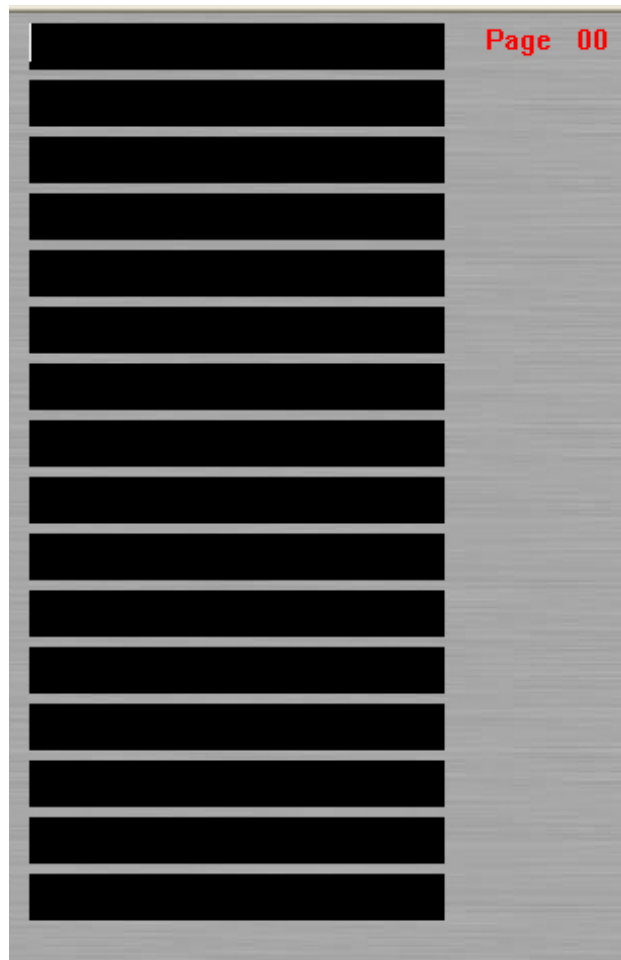
It gives you the option in turning on/off the status and tool bars on your display.

### *HELP*

Identify the current version of the software that you are using.

## **COMPOSING YOUR MESSAGE**

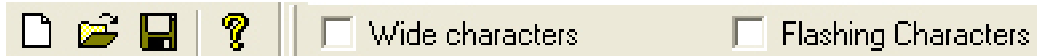
Right at the center of the display, you will see the following:



This is where you can type in the message that you want to display onto The InfoCenter.

Use the **[Page UP]** and **[Page DOWN]** key on your keyboard to change the current page numbers.

Use the Tool Bar to set the message's parameter. (Wide or Flashing Characters)



You can enter as much text into one page until you change its page number.

For example, you can have 5 pages of 'Page 00' filled with text. When the page is uploaded into The InfoCenter, it will display all 5 pages on Page 00.

### **PROGRAMMING THE SCRIPT**

<b>Scripts</b> Script 00 Script 01 Script 02 Script 03 Script 04 Script 05 Script 06 Script 07 Script 08 Script 09		<b>Edited Pages</b>  Add above Add below Add All		<b>Weekdays of Script 0</b> <input checked="" type="checkbox"/> Sunday <input checked="" type="checkbox"/> Monday <input checked="" type="checkbox"/> Tuesday	
<b>Start date of Script 0</b> 1/ 1/1970		<b>Stop date of Script 0</b> 12/30/2037		<b>Start time of Script 0</b> 0 H: 0 M	
				<b>Stop time of Script 0</b> 23 H: 59 M	
<b>Add the following pages into Script 0</b>					
Key	Pause	Style		↑ Up	
				↓ Down	
				✕ Delete	
				✕ Reset	
<b>Send Options</b> <input type="checkbox"/> Include Pages <input type="checkbox"/> Include Scripts				Accept Cancel	

Within the PROGRAM option, you can set up the scripts that allows The InfoCenter to display certain pages in a specific order on a certain date and time.

Scripts – Select the script number that you want to record your action.

Edited Pages – List of pages that you have edited. (Double click on the page number you want to add to the script)

Weekdays of Script – Check/Uncheck the day where you want to display the page(s)

Star time of Script/Stop time of Script – The start and end time where the script will be running.

Start date of script/Stop date of Script – The date where the script will be run.

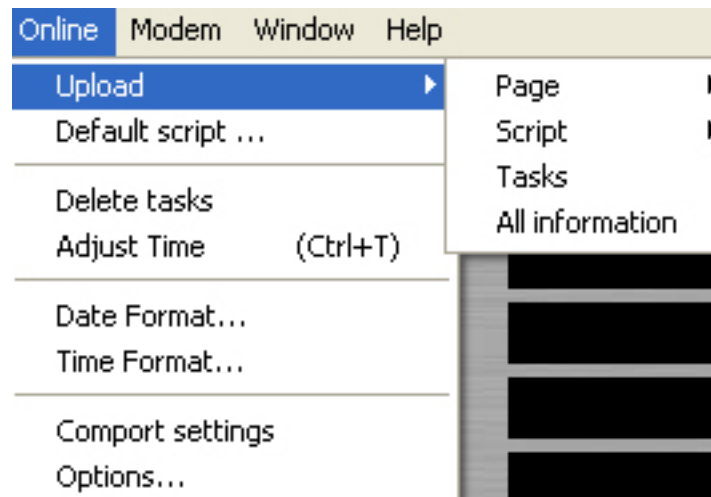
Add the following pages into Script – This option allows you to select a specific page that's already added to the script, and move it up and down. You can set the order of pages to be displayed by The InfoCenter.

Send Options – You can send either or both Pages and Scripts to The InfoCenter.

Accept/Cancel – Click Accept to save your program setting.

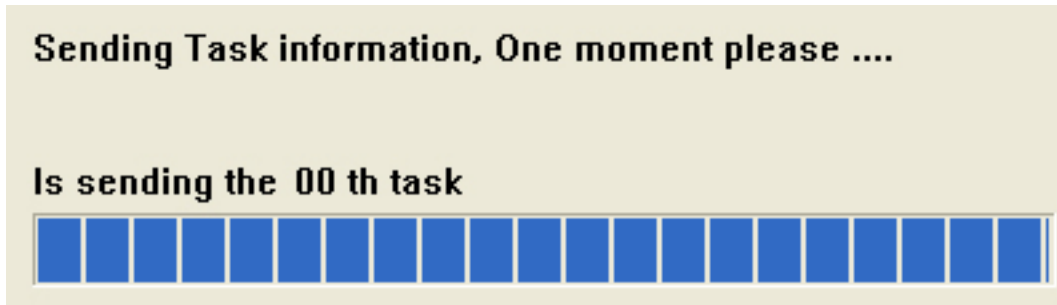
### **TRANSFER YOUR PAGES/SCRIPTS/TASK TO THE INFOCENTER**

After you have finish composing the pages, setting up the task/scripts, and ready to transfer all the information to The InfoCenter, you have to select the 'Online' option:



By Selecting 'Upload' – you will have the options to send the page(s), script(s), tasks (the schedules), or all information.

After you have selected the items to be transferred, you will see the following message:



After the transferring process, you will either see a confirmation message or an error message.

If you get an error message, please check or change your comport configuration. You should also check to see if the comport cable is connected correctly.

### **CONTACT INFORMATION**

Pro-Lite, Inc.  
3505 Cadillac Ave., Bldg. D  
Costa Mesa, California 92626

### **TECHNICAL SUPPORT**

<http://www.pro-lite.com/support>